

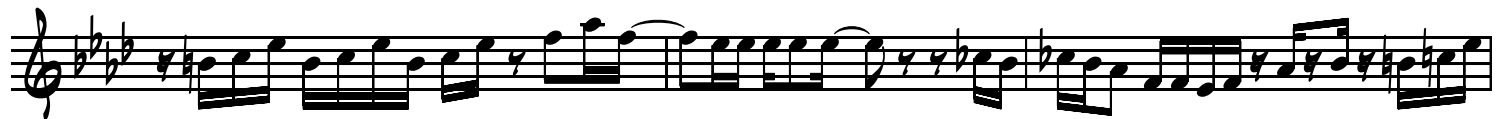
MACEO PARKER SOLO ON SOUL POWER

The image displays a musical score for a solo on the track "Soul Power" by Maceo Parker. The score is organized into three systems, each containing four staves of music. The first system is written in the key of D major (two sharps). The second system is written in the key of B minor (two flats). The third system is written in the key of D major (two sharps). The notation includes various rhythmic patterns, including eighth and sixteenth notes, and rests. There are also some dynamic markings like accents and slurs.

System 1: Four staves of music. The first staff is a treble clef with a key signature of one sharp (F#) and a common time signature. It contains a complex melodic line with many sixteenth and thirty-second notes. The second staff is a treble clef with a key signature of one flat (Bb) and a common time signature, featuring a melodic line with accents and slurs. The third staff is a treble clef with a key signature of one flat (Bb) and a common time signature, continuing the melodic line. The fourth staff is a treble clef with a key signature of one flat (Bb) and a common time signature, ending with a whole rest.

System 2: Four staves of music. The first staff is a treble clef with a key signature of three sharps (F#, C#, G#) and a common time signature. It contains a complex melodic line with many sixteenth and thirty-second notes. The second staff is a treble clef with a key signature of three sharps (F#, C#, G#) and a common time signature, featuring a melodic line with accents and slurs. The third staff is a treble clef with a key signature of three sharps (F#, C#, G#) and a common time signature, continuing the melodic line. The fourth staff is a treble clef with a key signature of three sharps (F#, C#, G#) and a common time signature, ending with a whole rest.

System 3: Four staves of music. The first staff is a treble clef with a key signature of one sharp (F#) and a common time signature. It contains a complex melodic line with many sixteenth and thirty-second notes. The second staff is a treble clef with a key signature of one sharp (F#) and a common time signature, featuring a melodic line with accents and slurs. The third staff is a treble clef with a key signature of one sharp (F#) and a common time signature, continuing the melodic line. The fourth staff is a treble clef with a key signature of one sharp (F#) and a common time signature, ending with a whole rest.



The image displays a page of musical notation consisting of 12 staves. The first four staves are in a key signature of four sharps (F#, C#, G#, D#) and a common time signature. The last eight staves are in a key signature of six flats (Bb, Eb, Ab, Db, Gb, Cb) and a common time signature. The notation includes various rhythmic values, accidentals, and phrasing slurs.